

# ProcScan – Notice to Users

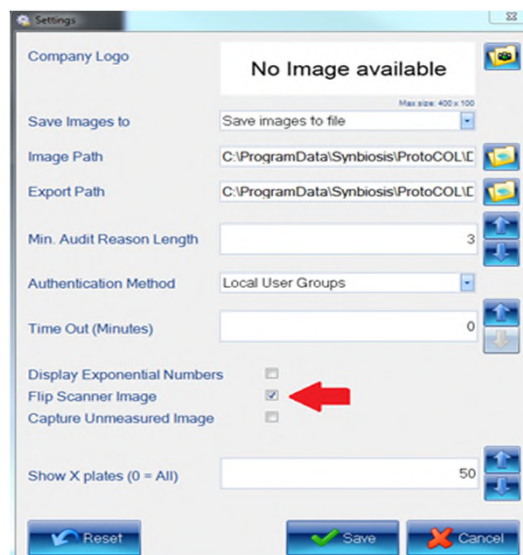
## Scanner Software Setup

### How to setup scanner software

1. Install the Epson Scan 2 software (and ProtoCOL 3 software if required) following manufacturers instructions
2. Log on to the system, and then log on to the ProtoCOL 3 software
3. In 'Settings', configure the Epson Expression 12000 XL scanner as the external TWAIN source as shown in the image below:



4. In the 'Systems Settings', choose to 'flip scanner image' as shown below:

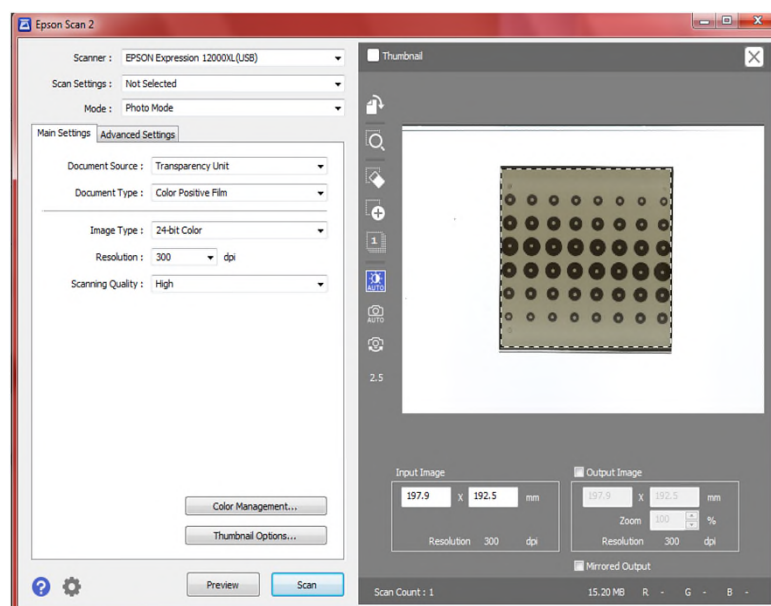


5. Select scanner by clicking on the 'Image' tab. Click on the image tab and select TWAIN device (if using a ProtoCOL 3 the TWAIN device is found in the dropdown menu on the internal camera tab)

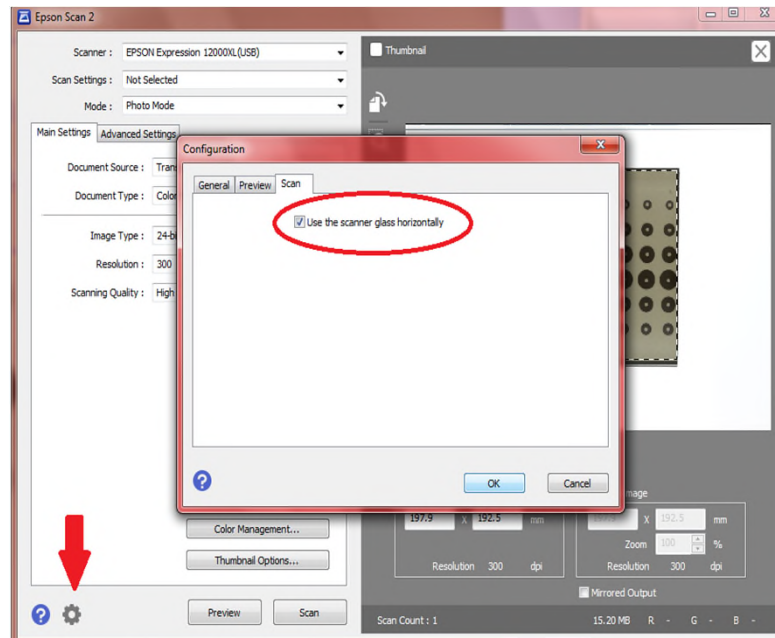


6. Click 'Capture Image' and the scanner TWAIN software will open

7. Select the following settings for the scanner; Mode: Photo mode, Document source: Transparency Unit, Document type: Colour Positive Film, Image type: 24-bit colour, Resolution: 150 - 300 dpi, Scanning quality: High



8. In the configuration settings (shown below) select the 'scan' tab and make sure that the 'use scanner glass horizontally' box is ticked.



9. Click 'Preview' then draw a box around previewed image of the validation plate and then click 'Scan'

10. Follow the steps in the ProcScan quick guide to set up a batch in the ProtoCOL 3 software

**Scan 2 software is now ready for use with the  
ProtoCOL 3 Software**

**CONTACT SYNBIOSIS:**

EUROPE:  
Tel: +44 (0)1223 727125  
Email: [support@synbiosis.com](mailto:support@synbiosis.com)  
[www.synbiosis.com](http://www.synbiosis.com)

USA:  
Tel: 800 686 4451/301 662 2863  
Email: [support@synbiosis.com](mailto:support@synbiosis.com)  
PSCANNTU0817